

METRA HIT | 27EX

Milliohmmeter

for Use in Potentially Explosive Atmospheres

3-349-335-03
8/5.19

Compact milliohmmeter for the measurement of low value contact resistance in potentially explosive atmospheres, for example at contacts inside aircraft fuel tanks (bonding test), as well as for general low value resistance measurements inside and outside of potentially explosive atmospheres, for example on aircraft outer skins (lightning protection and wick test)

- **Measuring ranges:** 30 m Ω , 300 m Ω , 3 Ω , 30 Ω
- **Resolution:** 10 $\mu\Omega$
- **Measuring method:** Kelvin connection (4-wire measurement)
- **DATA Hold memory:** 1200 measured values
- **EX designation:** Ex II 2 G Ex ia IIA T4 Gb
- **Prototype test certificate:** INERIS 05ATEX0040 ISSUE 01
- **DAkKS calibration certificate**
- **Included accessories:** Kelvin probe, Kelvin clip, batteries, protective rubber holster, hard case
- **Guarantee:** 3 years material and workmanship, 1 to 3 years for calibration (depending upon application)



Features

- **Indicator Displays**
LCD panel: 4 $\frac{3}{4}$ -place display for measured values, two auxiliary displays for special functions, background illumination, LCD test and overload display
2 LEDs : red and green, for evaluating contact quality
- **Kelvin Connection (4-wire measurement)**
 Suppresses influence from conductor and contact resistance on measuring results
- **Offset Balancing**
 In the lower measuring ranges an automatic offset balancing is conducted by thermovoltage compensation.
- **DATA Hold**
 For quick, reliable measurement and storage of individual measured values
- **Auto-Ranging**
 The instrument is equipped with automatic and manual measuring range selection
- **Power Supply**
 The instrument is operated with two Ex approved batteries. Power management: If none of the keys are actuated for a lengthy period of time, the milliohmmeter is shut down automatically. The instrument is also shut down automatically if the minimum voltage required to perform the selected measurement is fallen short of.
- **Protective Cover for Harsh Conditions**
 The device features a very compact, rugged design. Beyond this, it is protected against damage in the event of impacts or dropping by means of a soft protective rubber holster with tilt stand. The rubber material also assures that the instrument does not wander if it is set up on a vibrating surface.

Applications

The **METRA HIT | 27EX** is a compact, rugged and reliable instrument, which is equally suitable for precision measuring and recording tasks in the factory, for on-site service and in the laboratory. The instrument is certified for use in potentially explosive atmospheres in accordance with Ex II 2 G Ex ia IIA T4 Gb.

- Adjustment of shunts in instrumentation
- Testing of electrical connections at conductor bars for open-pit mining, in potential bonding systems, in industry and in household applications
- Testing of cable resistance, wiring, shunt resistors in PCBs and thick-film circuits
- Measurement of contact resistance in relays, contactors and power interrupters
- Testing of resistance in fuses, as well as conductor resistance in power current circuits
- Testing of coil resistance in transformers, coils, small motors etc.
- Testing of discharge resistance on aircraft, and at aircraft outer skin components
- Contact resistance testing in uninterruptible power supplies
- Contact resistance testing at welding seams

Milliohmmeter

for Use in Potentially Explosive Atmospheres

General

The **METRA HIT | 27EX** milliohm resistance meter is the modern alternative to the well known TH2 (Thomson) and Wh2 (Wheatstone) measuring bridges. It provides an expanded measuring range, greater accuracy and easier reading. As a universal measuring instrument, it acquires resistance values by feeding a test current through the respective resistor, conductor or contact, and records them to its integrated memory module.

Easy Operation

Operation is very easy. Simply connect the low-resistance device under test to the instrument with the included measurement cables, Kelvin clip or 4-pole probe, and select the ideal measuring range.

Integrated Measured Value Memory and Interface

The **METRA HIT | 27EX** is equipped with a measured value memory module and can be utilized as a data logger or a recording instrument. Measurement results can be transmitted to a PC either off-line via the optical interface which is furnished as standard equipment, or online with an optional bidirectional adapter. In this way, characteristic curves can be displayed and analyzed in line recorder format relative to real time, or individual measured values can be saved with the DATA Hold function and analyzed at a PC in tabular form.

METRAwin10/METRAHit Software Option

Measurement data recorded to the measured value memory module can be evaluated at a PC if required with the help of the IR interface supplied as standard equipment and a bidirectional IR adapter („USB-HIT“) with conversion to the USB protocol.

METRAwin10/METRAHit software is recommended to this end, which is suitable for display, analysis and documentation of measurement results using Windows 7, 8 or 10. The software is available as an accessory. User-friendly USB package is easy to connect and install and includes everything required for high performance measurement data processing.

Applicable Regulations and Standards

IEC/EN 61 010-1:2010 VDE 0411-1:2011	Safety requirements for electrical equipment for measurement, control and laboratory use
EN 60529 VDE 0470, part 1	Test instruments and test procedures Degrees of protection provided by enclosures (IP code)
DIN EN 61 326-1 VDE 0843-20-1	Electrical equipment for measurement, control and laboratory use – EMC requirements – Part 1: General requirements
DIN EN 60079-0:2013 VDE 170-01	Electrical apparatus for explosive gasatmosphere, general requirements
DIN EN 60079-11:2012 VDE 170-7	Explosive atmosphere

Included

- 1 **METRA HIT | 27EX**
- 1 GH18 protective rubber holster (blue) including carrying strap
- 8 Ex approved batteries
- 1 KC27 Kelvin probe (1 ea. – not a set)
- 1 KC4 Kelvin clip (1 ea. – not a set)
- 1 HC30 hard case
- 1 DAkkS calibration certificate
- 1 Ex certificate: INERIS 05ATEX0040 ISSUE 01
- 1 set operating instructions

Characteristic Values

Measuring Function	Measuring Range	Resolution at Upper Range Limit 4% 30000 / 3% 3000 ¹⁾	Open-Circuit Voltage, Approx.	Meas. Current, Approx.
mΩ (4 L)	30 mΩ	0.01 mΩ	4 ... 6 V	100 mA
	300 mΩ	0.01 mΩ		100 mA
	3 Ω	0.1 mΩ		10 mA
	30 Ω	1 mΩ		10 mA

- ¹⁾ Display
 4¾-place in the 300 mΩ, 3 Ω and 30 Ω ranges
 3¾-place in the 30 mΩ range
 A different sampling rate and can also be selected in the rAtE menu for saving and transmitting measured values.

Measuring Function	Intrinsic Error at Max. Resolution under Reference Conditions ±(% rdg. + ... d)	Overload Capacity ²⁾		
		Value	Time	
mΩ (4 L)	30 mΩ	±0.6 V ³⁾	Continuous	
	300 mΩ			2 + 20
	3 Ω			1 + 20 ⁴⁾
	30 Ω			1 + 10

- ²⁾ At 0 ° ... + 40 °C
³⁾ The integrated 500 mA / 600 V~ fuse blows in the event of overloading (terminals I+, I-).
⁴⁾ Valid as of 10% of measuring range

Key

rdg. = reading (measured value), d = digit(s), 4 L = 4-wire measurement

Influencing Quantities and Influence Error

Influencing Quantity	Sphere of Influence	Measuring Range ¹⁾	Influence Error ± (... % rdg. + d)/10 K
Temperature	0 ... +21 °C and +25 ... +40 °C	mΩ, Ω	1 + 10

- ¹⁾ With zero balancing

Influencing Quantity	Sphere of Influence	Measuring Range ¹⁾	Influence Error
Relative Humidity	90% 3 days instrument off	All measuring ranges	1 x intrinsic error

- ¹⁾ With zero balancing

Real-Time Clock

Accuracy ±1 minute per month
 Temperature influence 50 ppm/K

Reference Conditions

Ambient temperature +23 °C ±2 K
 Relative humidity 40 ... 60%
 Battery voltage 5.0 V ±0.1 V

Response Time

Response Time (after manual range selection)

Measuring Range	Response Time Digital Display	Measured Quantity Waveshape
mΩ, Ω	1.5 s	From ∞ to 50% of upper range limit value

- * Without parallel connected capacitance

for Use in Potentially Explosive Atmospheres

Indicator Displays

LCD panel (65 x 30 mm) with display of up to 2 measured values, unit of measure and various special functions.

Display / char. height 7-segment characters
 Main display: 12 mm
 Auxiliary displays: 7 mm

Number of places 4¾-place \geq 30,999 steps

Overflow display "D. L" appears

LCD Test All display segments available during operation of the instrument are activated after it is switched on.

Background illumination can be switched on and off

OK LED (green) lights up to indicate good contact at the measuring point

Error LED (red) lights up to indicate interrupted test current (invalid measurement, poor contact when „D. L“ appears)

Power Supply

Batteries 4 x 1,5 V AA-Size: ARCAS Alkaline LR6 or Camelion Plus LR6

Details on newly certified (type-tested) batteries which are exclusively approved for this milliohmmeter are included in the updated datasheet or the updated operating instructions on our website.

Service life

Measuring Function	Number of measurements *
mΩ at 100 mA	> 500
Ω at 10 mA	> 800

* 1 measuring cycle = 5 s

Additional consumption for:

Interface operation: 0.5 mA

LCD illumination: 40 mA at 6 V

Battery test mΩ range at 100 mA:
 Automatic display of the **+** symbol when battery voltage falls below approx. 4.6 V. Instrument is shut down at less than 4.3 V.

Fuses

Fuse link
 F1 for mΩ / Ω ranges 500 mA / 600 V AC, switching capacity: 60 A at 600 V AC


F2 for batteries 250 mA / 125 V AC EX

Electrical Safety

Safety class II per IEC/EN 61010-1:2010 / VDE 0411-1:2011

Measuring category 50 V CAT I

Pollution degree 2

EX designation CE 0080
 II 2 G Ex ia IIA T4 Gb
 Ex = type tested
 II = device group
 2 = device category
 G = atmosphere (gas)
 Ex = conforms with European Ex standards
 ia = explosion protection (intrinsically safe)
 IIA = explosion group
 T4 = temperature class
 Gb = Equipment Protection Level (EPL)

Tamb. = -10 °C ... +50 °C
 (Tamb. = ambient temperature)

Prototype test certificate INERIS 05ATEX0040 ISSUE 01
 INERIS = test and certification authority
 05 = year
 ATEX = directive (atmosphere, explosive)
 0040 ISSUE 01 = test report no. 40

Electromagnetic Compatibility (EMC)

Interference emission/
 Interference immunity EN 61326:2013 Tab A1

Data Interface

Data transmission (data transfer) Bidirectional, optical via infrared light through the housing (read data and configure parameters)

With interface adapter as accessory
 BD232 IR to RS 232C, serial, per DIN 19241, can be cascaded for multi-channel operation

USB-HIT IR to USB 1.1 / USB 2.0, single-channel operation

Baud rate (MM ↔ PC) 9600 baud

Ambient Conditions

Accuracy range 0 °C ... +40 °C
 Operating temp. range -10 °C ... +50 °C
 Storage temp. range -25 °C ... +70 °C (without batteries)
 Relative humidity 45% ... 90%, no condensation allowed
 Elevation to 2000 m

Mechanical Design

Protection IP 54

Table Excerpt Regarding Significance of the IP Code

IP XY (1 st digit X)	Protection against penetration by solid particles	IP XY (2 nd digit Y)	Protection against penetration by water
5	dust protected	4	Splashing water

Dimensions 84 x 195 x 35 mm
 Weight Approx. 380 g with batteries (without GH18 protective rubber holster)

METRA HIT | 27EX

Milliohmmeter

for Use in Potentially Explosive Atmospheres

Accessories

(See also table below: "Order Information".)

The following accessories, some of which are included as standard equipment, are recommended for use with the **METRA HIT | 27EX**:

Milliohm Measurement with KC4 Kelvin Clips

Kelvin clips are suitable for establishing contact between the **METRA HIT | 27EX** and low-resistance devices under test. They compensate for influence resulting from cable and contact resistance. The KC4 set includes two clips with insulated, twist-resistant jaws and good clamping action. They can be used for establishing contact with very fine wires, right on up to rails and rods with a maximum diameter of 15 mm.

4-pole connection is highly advisable for measuring values of less than 30 Ω .



Milliohm Measurement with KC27 Kelvin Probe

Same application as KC4, but with 2 spring-loaded steel tips each for piercing insulation coatings (e.g. on aircraft outer skins) and oxide layers (e.g. at oxidized battery contacts) in order to assure good contact for milliohm measurements.



Ever-Ready Cases and Hard Cases

The following hard-shell cases are available:

HC20 with space for one **METRA HIT |** and accessories.

HC30 with space for, for example, 2 **METRA HIT |**s, one 2-channel PC recording system with software, adapter, cable and accessories.



HitBag Cordura Belt Pouch
For **METRA HIT |**
and METRAport



for Use in Potentially Explosive Atmospheres

Accessories for Operation with PCs

USB-HIT Interface Adapter

The adapter makes it possible to connect a multimeter with IR interface to the USB port at a PC. The adapter allows for data transmission between the multimeter and the PC.



USB-Pack

Set consisting of USB-HIT interface adapter, USB cable and METRAwin 10 / METRAHit software.

METRAwin10/METRAHit Software

METRAwin10/METRAHit PC software is a multilingual, measurement data logging program for recording, visualizing and documenting measured values from METRA HIT | 27EX multimeters.

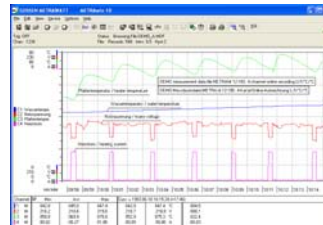
Communication between the PC and the measuring instrument(s) is established via available interfaces and memory adapters. Telephone modems can be interconnected as well.

Depending upon device type, one or several of the following operating modes are possible:

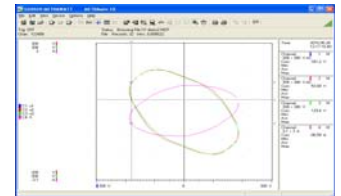
- **Device Configuration**
Remote configuration and querying of device-specific functions and parameters, for example measuring function, measuring range and memory parameters. Frequently used device settings can be saved to configuration files for easy recall.
- **Online Recording of Measurement Data**
Read-in, display and recording of momentarily measured data from the interconnected device.
 - Number of measuring channels up to 10
 - Start recording manual, triggered by measured value, time triggered
 - Recording mode > time controlled with sampling interval of 0.05 s* ... 1 s ... 60 min
> manually controlled
> measured value controlled in event of exceeded limit/delta value
 - Recording duration max. 10 million intervals
- * Depending upon device type, measuring function, number of measuring channels and communication (e.g. via modem), sample intervals of less than 1 s cannot be used.
- **Reading Out and Visualizing Stored Data**
If supported by the device: read-in and display of offline data recorded to device memory.

For purposes of analysis, data recorded online or read in from the device's memory can be displayed in various formats:

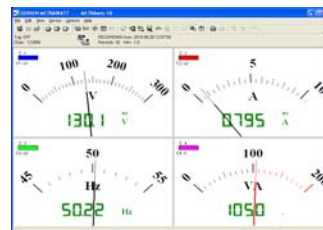
Y(t)-recorder display
for up to 6 channels



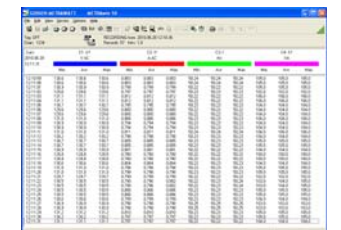
XY-recorder display
for up to 4 channels



Multimeter-display
for up to 4 channels



Tabular display
for up to 10 channels



System Requirements

METRAwin 10 (as of version 5.x) can be run on IBM compatible PCs with Microsoft Windows® 7, 8 or 10

Milliohmmeter

for Use in Potentially Explosive Atmospheres

Order Information

Description	Type	Article Number
Special milliohmmeter for use in potentially explosive atmospheres, EX II 2G EEX ia IIA T4, incl. one Kelvin probe, one Kelvin clip and batteries in hard case HC30 with DAKKS Calibration Certificate		
Same version as above, but without particular designation; for customers from the chemical industry or aviation enterprises	METRAHIT 27EX GMC-I-Ausführung	M227F
Version for AIRBUS customers (maintenance services of airlines). The milliohmmeter is stipulated in the so-called AMM (Aircraft Maintenance Manual) for aircraft types A300..380, article numbers 97F92003500 and 97000F92001015000	METRAHIT 27EX AIRBUS-Ausführung	M227G
Hardware Accessories		
Ex approved Batteries * (1 package of 10 ea.) 1,5 V AA-Size	BAT27	Z206F
Kelvin clips (1 set of 2 ea.) for 4-pole connection of low-resistance DUTs, cable length: 120 cm	KC4	Z227A
Kelvin probes (1 set of 2 ea.) with double steel tips for 4-pole connection of low-resistance DUTs	KC27	Z227B
Cable set with 2 mm diameter steel tips and 120 cm cable, 1000 V/CAT II	KS17-S	Z110H
Transport Accessories		
Cordura belt pouch for multimeters METRAHIT	HitBag	Z115A
Hard case for one METRAHIT and accessories	HC20	Z113A
Hard case for two METRAHITs and accessories	HC30	Z113A
Accessories for Operation at a PC		
Single-channel pack consisting of BD232 bidirectional interface adapter, cable, METRAwin10/METRAHit software and installation instructions	BD-Pack 1	Z215A
Bidirectional interface adapter	BD232	GTZ3242100R0001
RS 232 interface cable, 2 m (included with Z3231)	Z3241	GTZ3241000R0001
METRAwin10/METRAHit software update and installation instructions	Z3240	GTZ3240000R0001
IR-USB bidirectional interface adapter for METRAHIT	USB-HIT	Z216A
Set consisting of interface adapter USB-HIT, USB cable and METRAwin10/METRAHit software	USB-Pack	Z216B

For additional information regarding accessories please see:

- Measuring Instruments and Testers catalog
- www.gossenmetrawatt.com

* Details on **newly certified (type-tested) batteries** which are exclusively approved for this milliohmmeter are included in the updated datasheet or the updated operating instructions on our website.